

Company information materials for new graduates and mid-career hires



KH INDUSTRY CO.,LTD.

Table of Contents

1

Company Profile

2

Vision and Mission

3

Business details

4

Message to participants

5

Recruitment Information

Company Profile



Company Profile

KH INDUSTRY CO.,LTD.

CEO Yoshiyuki Hirano

Established in April 1997

969-1 Tazono, Naka-ku, Sakai City, Osaka Prefecture

Number of employees: 17

Capital: 20 million yen

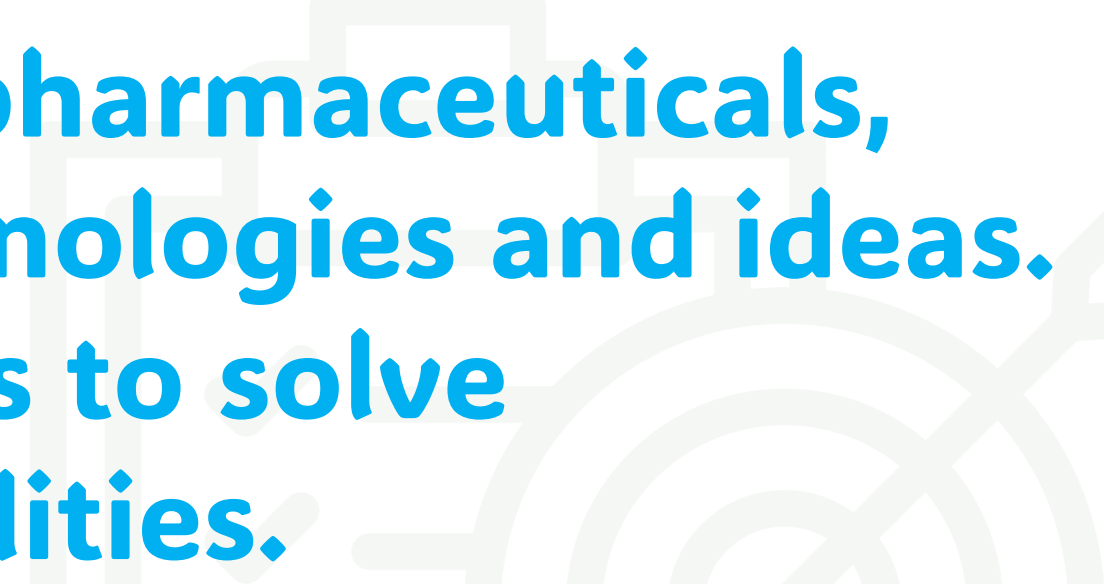


Vision and Mission



VISION

KH Industries Co., Ltd. is a plant engineering company that addresses various issues faced by customers in manufacturing plants for chemicals, pharmaceuticals, food, etc., and proposes optimal technologies and ideas. We work together with our customers to solve fundamental problems with their facilities.



MISSION

We aim to be a company that supports society through the power of manufacturing and changes the world's trends with technology.

Plant engineering is an important job that fundamentally supports the lives of people around the world, including the manufacture of pharmaceuticals, food, and chemical products.

We value the growth of each and every engineer, and aim to develop global engineers who combine technical and interpersonal skills in an environment where they can take on responsible work from a young age.

Business details



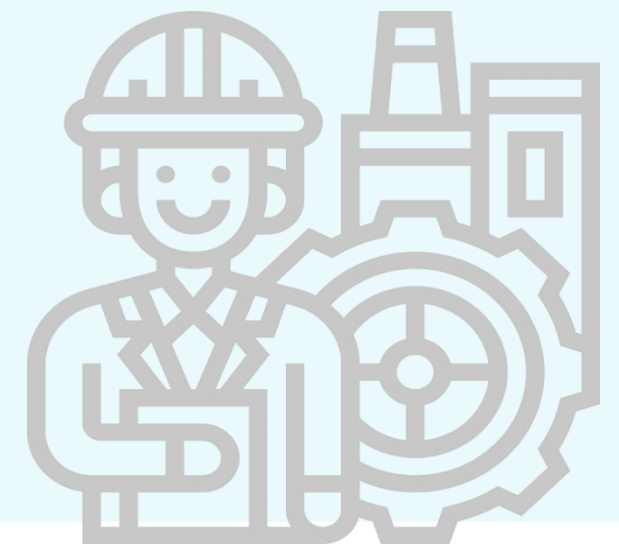
Plant engineering

KH Industries Co., Ltd. supports factory facilities that produce products essential to society through plant engineering.

We undertake a wide range of projects, including new construction, relocation, expansion, and renovation, for factories in sectors that support people's lives and social infrastructure, such as food, chemicals, energy, and materials.

Thanks to our many years of experience and high technical capabilities, we do business with many well-known major companies and have built a stable management base that is less susceptible to economic fluctuations.

As a plant engineer, one of the great attractions of working At KH is the opportunity to be involved in work that has a major impact on society.



Plant engineering



Piping and Instrumentation Diagram Drawing (2D · 3D)

Basic and detailed designs form the foundation of plant construction. At KH Industry Co., Ltd., we hold numerous meetings with our clients to create the entire factory's equipment layout and process design, including piping and instrumentation diagrams (P&IDs). We don't just draw blueprints; we also create designs that take into consideration safety, production efficiency, future expandability, and ease of maintenance, significantly developing our engineers' logical thinking and problem-solving skills.

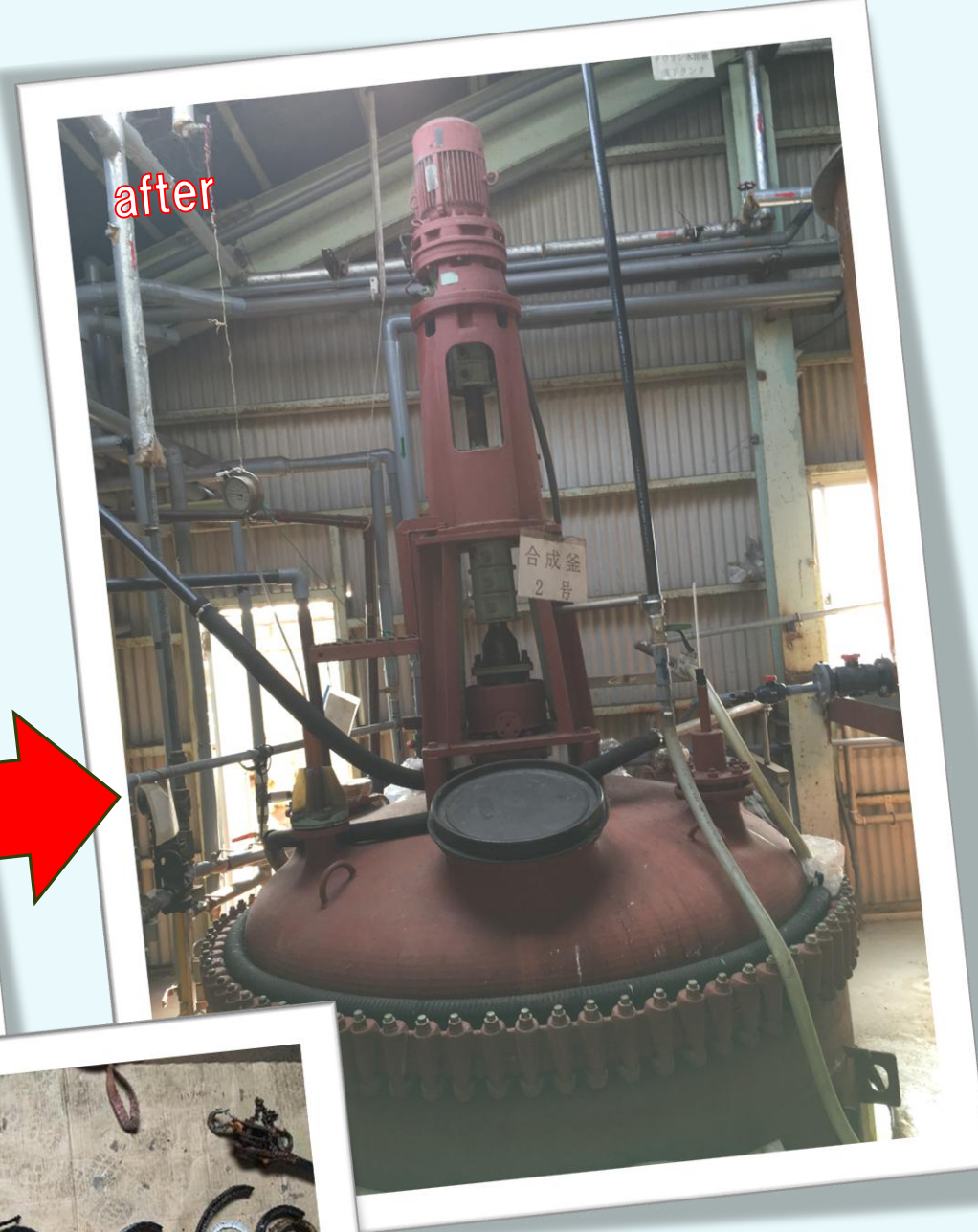
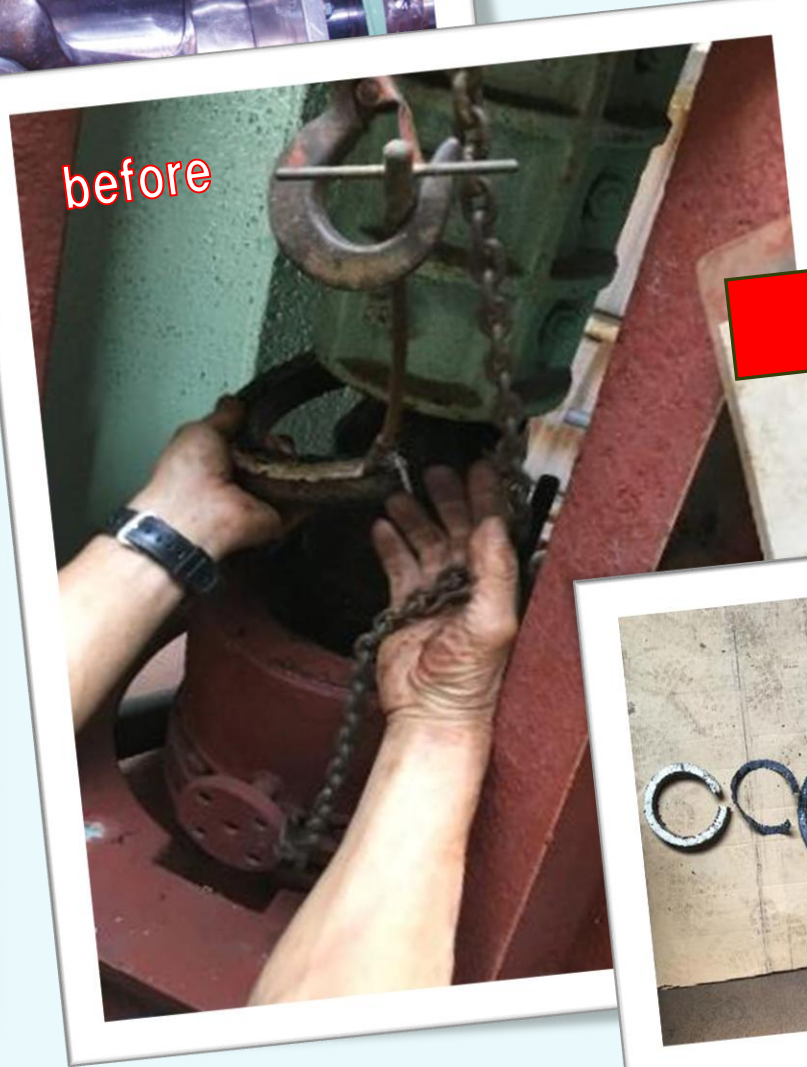
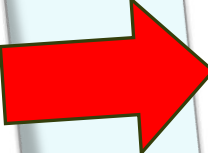
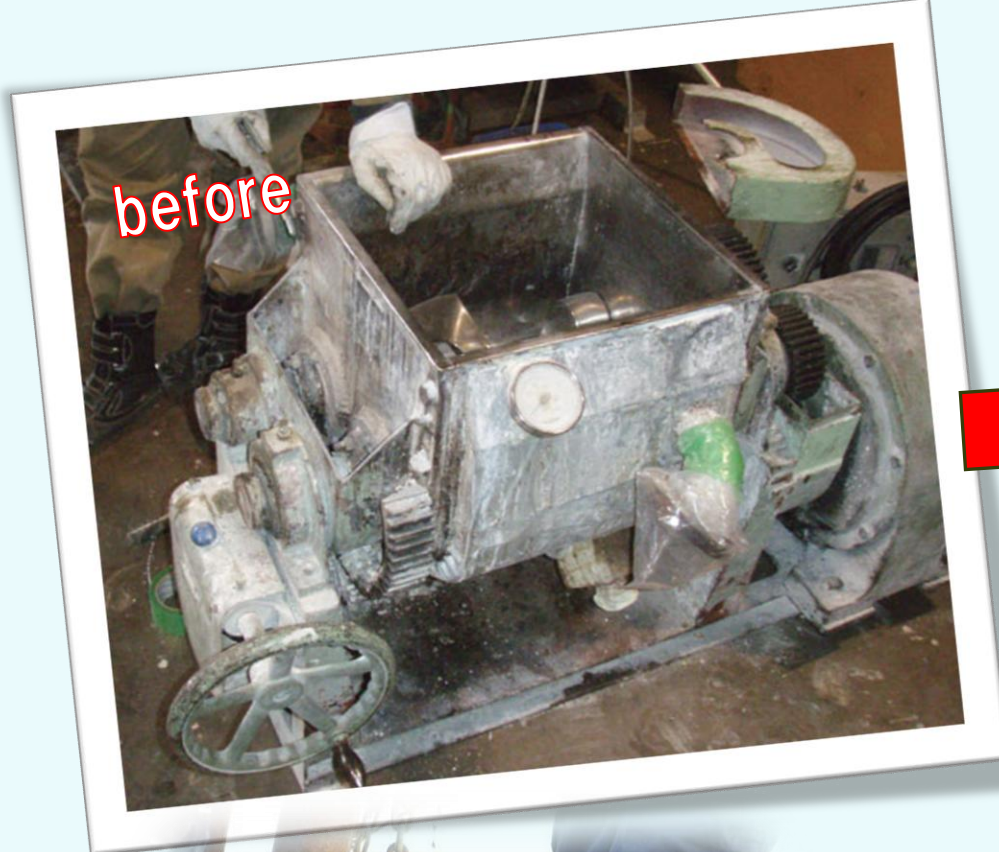


Equipment restoration and production

KH Industry Co., Ltd. excels in equipment restoration and manufacturing. Our in-house team of professional craftsmen and engineers works Together to respond to customer requests, such as "I want to repair old equipment so I can continue using it" or "I want original equipment made to suit the site, rather than an off-the-shelf product." Because we handle everything from design to manufacturing, we offer an environment where you can learn not only from theoretical knowledge but also by interacting with the real thing.



Equipment restoration and production

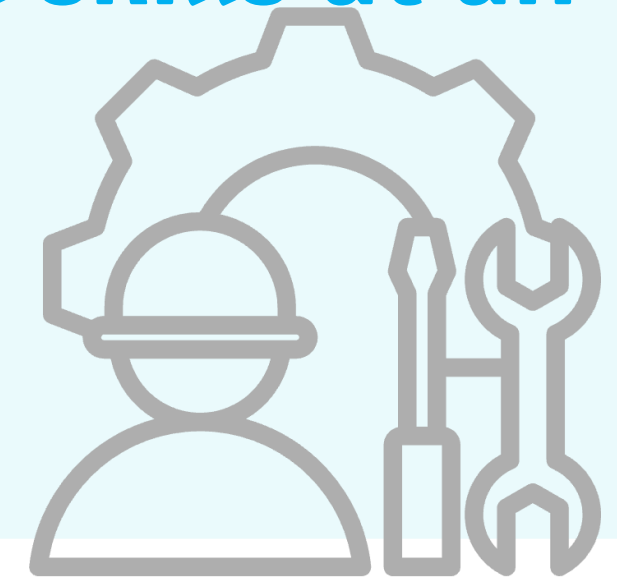


Maintenance

KH Industry Co., Ltd. originally started out as a maintenance company.

As a result, we are able to handle a much wider range of equipment inspections, maintenance, and troubleshooting than other companies.

By gaining experience seeing and touching equipment on site, even new employees can acquire practical technical skills at an early stage.



Message



Message from the President

We believe that our work fundamentally supports the "ordinary life" and "continuity of industry" that exist in the world. If factories stop, products cannot be produced and society cannot move forward. KH has continued to support society itself by supporting factories (plants).

You are now about to take your first steps as engineers.

The theories, calculations, and design concepts you learned in textbooks will only become your "true strength" when you are on the job site. At KH, you will experience the entire plant process, from design and manufacturing to construction and maintenance. We believe this is an environment where, as an engineer, you can understand the "whole" rather than just the "parts."

In the coming era, plant engineers will need not only technical skills but also the ability to understand diverse values and connect with the world. KH aspires to be a company where people can grow together towards the same goal, regardless of nationality or cultural differences.

Message from the President

You don't need to be able to do everything when you join the company. At KH, we have an environment where you can learn through failure, inherit skills and ways of thinking from your seniors, and grow into a fully-fledged engineer over time. In particular, KH is a company that started out in maintenance. We have an ingrained culture of getting to know the site, understanding the equipment, and constantly asking ourselves questions like, "Why is it designed this way?" and "How can we make it better?" This accumulation of experience has led to flexible response capabilities and technical capabilities that are unmatched by other companies.

If you are thinking, "I want to do work that is truly needed by society," "I want to learn on the job and become a skilled engineer," or "I want to work at a company where I can hone my skills for the long term with peace of mind," then KH can surely help you. We believe that the growth of each and every one of you is the future of the company and its contribution to society itself. Come and take your first step as a plant engineer at KH.

Recruitment Information

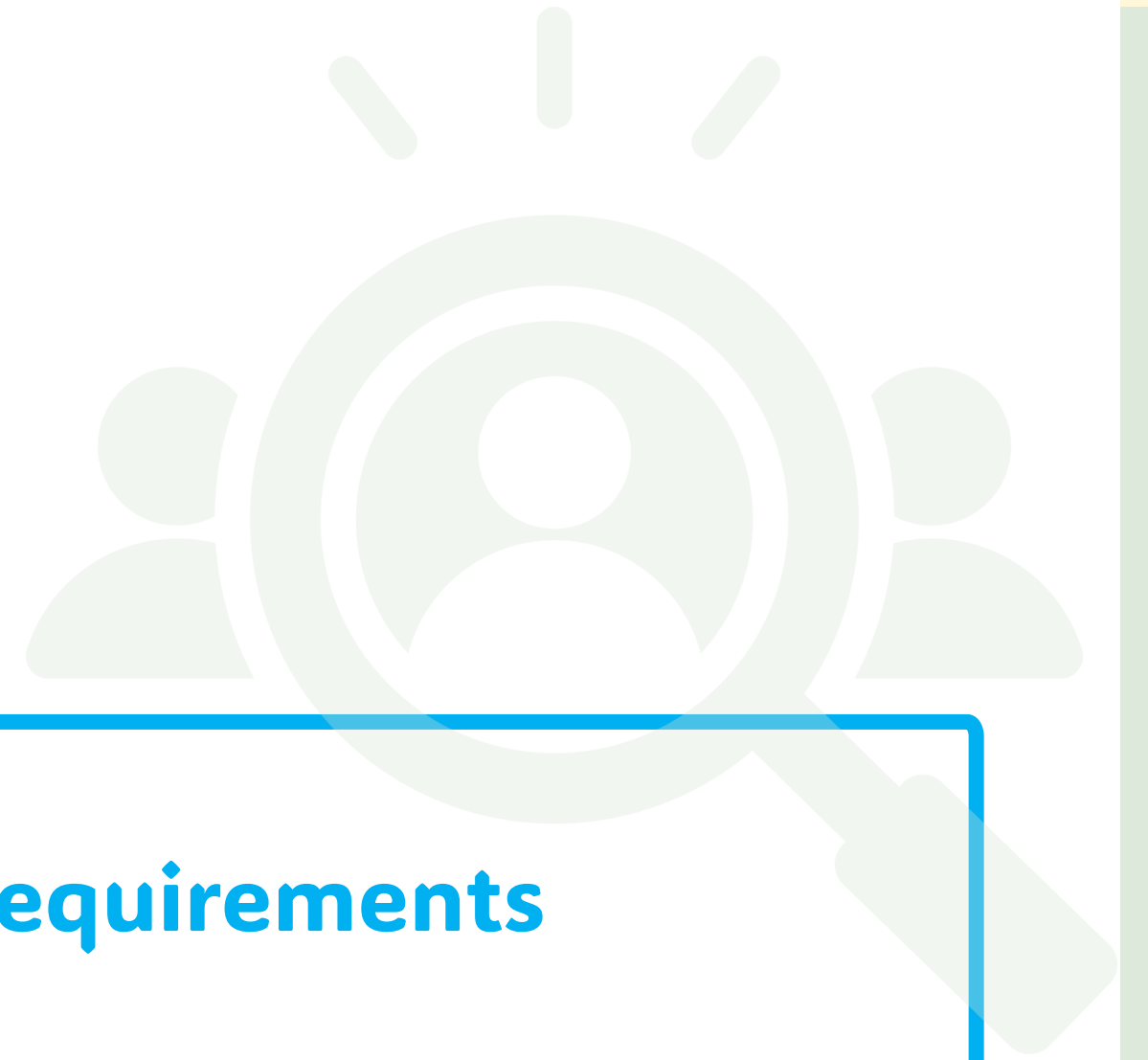


Job openings

Plant Engineer

**Please see our website for recruitment requirements
for each position.**

<https://www.jobs-kh.jp/en/entry>



KH Industry Co.,Ltd

969-1,Tazono,Nakaku,Sakai-shi,

Osaka-fu,599-8246

TEL:072-234-0781

<https://www.kh-co.jp>

